

THE SPECIFICATION

All the "CAMINARGENT" models originate from a unique idea.

They are built up from aluminium alloys of different formulae for tubes, lugs, stays, etc. . . .

The frames are built as follows :—

Octagonal Duralumin Tubing.

Forks and seat stays in Almasilium.

Lugs and fork-head in cut-a-way cast aluminium alloy.

"Stronlight" chainwheel set in Duraluminium.

Parts and accessories : brakes, mudguards, hubs, pedals, rims, cogs, seat pillars, framework of saddle, carriers and pumps are in Duraluminium.

"Caminargent" Handlebars in Duraluminium.

Height of Frames $21\frac{1}{2}$ ", 22 ", $22\frac{1}{2}$ ", 23 ", taken from centre to centre.

The lugs are picked out in blue, red, green or black.

70° Head, 70° Seat, $42\frac{1}{4}$ " wheelbase, $10\frac{3}{8}$ " bracket height, $2\frac{1}{2}$ " fork offset.

The "CAMINARGENT" cycle is neither enamelled nor nickel plated, but is easily kept clean. The metal is polished and is never influenced by atmospheric conditions.

FOR THE TRACK
"CAMINARGENT"
"BORDEAUX - PARIS"

SPECIFICATION

Weight 12½ lbs.

FRAME. Octagonal Duralumin tubing, cut-a-way cast aluminium lugs, bolted up frame with special double bolts—no rough edges to catch, rigid and light. Tapered straight seat stays and tapered chain stays in Almasilium. Usual frame sizes.

FORKS. Tapered butted blades, rake as illustrated, bolted on quick release ends—on same principle as lugs, made in resilient Almasilium

WHEELS. 27", Duralumin rims, double butted spokes tied and soldered. Special tubulars, silk canvas stitched by hand 1.03"

PEDALS. Duralumin, solid centre, hollowed spindle, quill pattern.

SADDLE. Caminargent with Duralumin framework.

BRAKES. One front Duralumin "LAM" Calliper with silver cable.

CHAINWHEEL & CRANKS "Stronlight" set in Duralumin with cotterless cranks.

CHAIN. Brampton ½" x ⅜" roller.

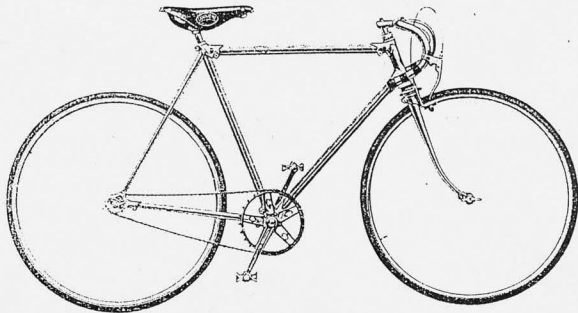
HANDLEBARS "Caminargent" 17" in Duralumin as illustrated, or to order.

GEAR. Fixed wheel.

EQUIPMENT. 15" "Caminargent" pump. Special Spanner for lug bolts.

LUBRICATION. Tecalemit.

FINISH. Polished with lugs picked out in blue, red, black or green.



BORDEAUX - PARIS

£20. 0. 0

PARIS - ROUBAIX

£22. 15. 0

Specification as for **"BORDEAUX - PARIS"** but with 3-speed
"Caminade" Derailleur gear. 2 brakes. Special Wolber W.15
 Tubulars, stitched by hand 1.11"

Weight about 17½ lbs.

FOR TOURING
"CAMINARGENT"
"RANDONNEUSE"
 de Luxe

SPECIFICATION

Weight about 18½ lbs.

FRAME. Octagonal Duralumin tubing cut-a-way cast Duralumin lugs. Bolted-up frame with special double bolts—leaving no raw edges to catch on the clothes. Tapered straight seat stays and chain stays in resilient Almasilium. Usual frame sizes.

FORKS. Tapered butted blades, rake as illustrated, bolted-on quick release ends, made in Almasilium. Fork-head in cut-away Aluminium.

WHEELS. Duralumin rims, Caminargent spokes, nipples, washers and hubs. Wolber W.15 tubulars, stitched by hand 1.11".

PEDALS. Duralumin, solid centres.

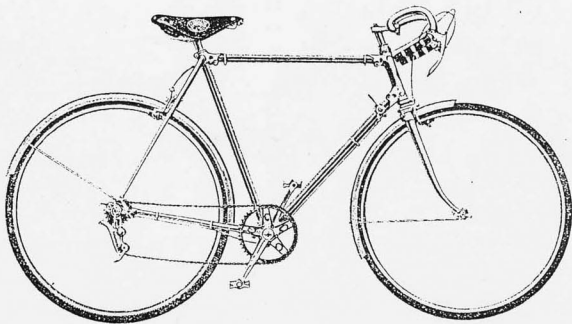
SADDLE. "Caminargent" Duralumin framework.

BRAKES. Two "LAM" Duralumin brakes.

CHAINWHEEL SET. "Stronlight."

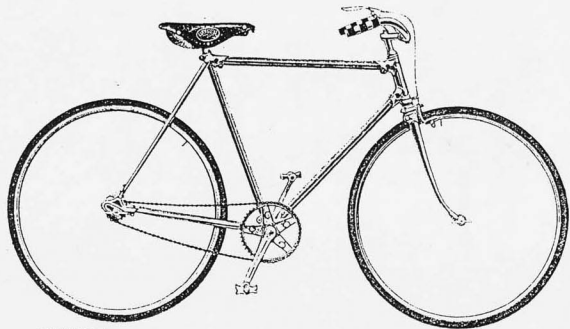
GEAR. 3-speed "Caminade" Deraillieur (the chain remains in line, gear changing is affected by displacement of cogs). Automatic chain tighteners.

FINISH. Polished, hollows in lugs picked out with black, red, blue or green.



RANDONNEUSE A	£23 : 10 : 0
.. LADY'S	£24 : 0 : 0
RANDONNEUSE B	£23 : 10 : 0
.. LADY'S	£24 : 0 : 0

Specification as for "RANDONNEUSE" A, but with detachable inner tubes and covers, semi-balloon covers made by hand 1½" Weight about 20 lbs.



FOR THE ROAD
"CAMINARGENT"
"DANDY" A

SPECIFICATION

Weight about 15 lbs.

FRAME. Octagonal Duralumin tubing cut-a-way cast Duralumin lugs. Bolted up frame with special double bolts. Tapered straight seat stays and chain stays in resilient Almasilium. Usual frame sizes.

FORKS. Tapered butted blades, rake as illustrated, bolted on quick-release ends, made in Almasilium.

WHEELS. Duralumin rims. Double butted spokes tied and soldered at the crossings. Duralumin Caminargent hubs.

TYRES. Wolber W.15 tubulars, stitched by hand 1.11"

PEDALS. Duralumin, solid centres, quill pattern.

SADDLE. "Caminargent," Duralumin framework.

BRAKES. One front Duralumin "LAM" brake.

CHAINWHEEL SET "Stronlight" in Duralumin with cotterless cranks.

CHAIN. Brampton $\frac{1}{2}$ " x $\frac{3}{32}$ " roller.

HANDLEBAR. "Caminargent."

GEAR. Free wheel.

EQUIPMENT. 15" pump, spanner for lugs.

FINISH. polished with hollows in lugs picked out in black, red, blue or green.

DANDY A	£18 : 18 : 0
.. LADY'S	£19 : 10 : 0
DANDY B	£18 : 18 : 0
.. LADY'S	£19 : 10 : 0

Specification as for "DANDY" A but with detachable tubes and covers for tyres, semi-balloon covers made by hand, $1\frac{1}{2}$ "
 Weight about 17 lbs.

CHARACTERISTICS of the CAMINARGENT

(patent No. 3912-09)

The year 1936 is more than a date—it is an epoch. The evolution of modern metallurgy has allowed us to entirely transform the construction of the cycle, by using French aluminium alloys.

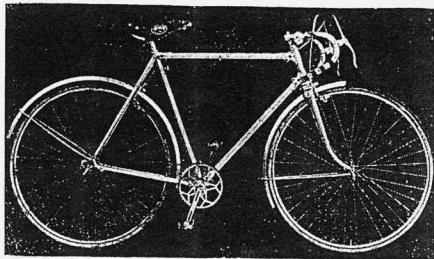
The basis of this new construction is as follows :—

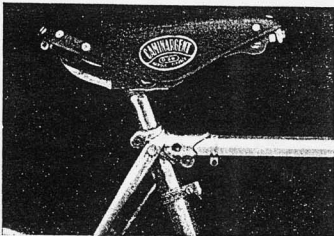
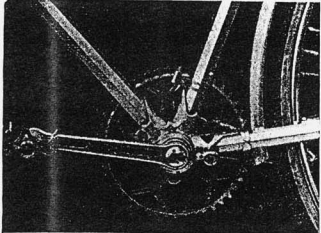
The frame consists of Duralumin tubes joined together by lugs running in the direction of the tubing. The assembly is the same for the bottom bracket. The interior of these lugs is eight-sided.

As one can see from the illustrations on the opposite page, the frame, thus assembled, is firmly fixed at each joint by a double bolt which has no nut (the tightening is made by one bolt screwing into the other bolt) This gives two similar and smooth faces on the outside. A small simple box spanner ensures their tightness.

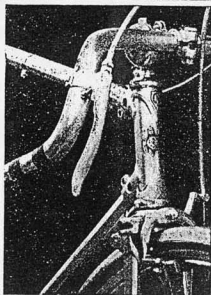
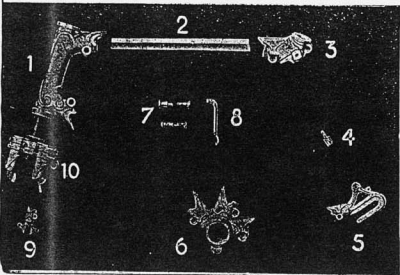
The tubes are in Duraluminium, a metal of the density of 2.7 offering a resistance of 42 kilos (92½ lbs) to the square millimetre. By doubling the section in thickness a resistance of 84 kilos (185 lbs) is obtained on 2 millimetres, at the same time preserving the great advantage of weight over ordinary steel. The latter, with a density of 7.8 gives a resistance of 60 kilos (132½ lbs.) when in a compressed and hammered down state but this resistance falls to about 45 kilos (99 lbs) after brazing. The seat stays, chain stays and forks are in Almasilium; the strength and suppleness of this metal cannot be beaten.

- The "CAMINARGENT"** is light and strong.
- The "CAMINARGENT"** is neither brazed nor soldered.
- The "CAMINARGENT"** is neither enamelled nor nickel plated.
- The "CAMINARGENT"** is made entirely from French materials.





These illustrations give a closer view of the unusual lugs in the bolted-up "CAMINARGENT" frame. The bicycle can be easily taken to pieces for ease of conveyance or for the fitting of new parts. A special spanner to fit all the nuts and double bolts is supplied with the machine. The lugs are filled with cork insertions which strengthen the joints and keeps the cycle rigid.



The axle of the bottom bracket is square-ended and the crank fits on without cotters.

The front fork has a bolted-on end where the fork end is usually brazed-on.